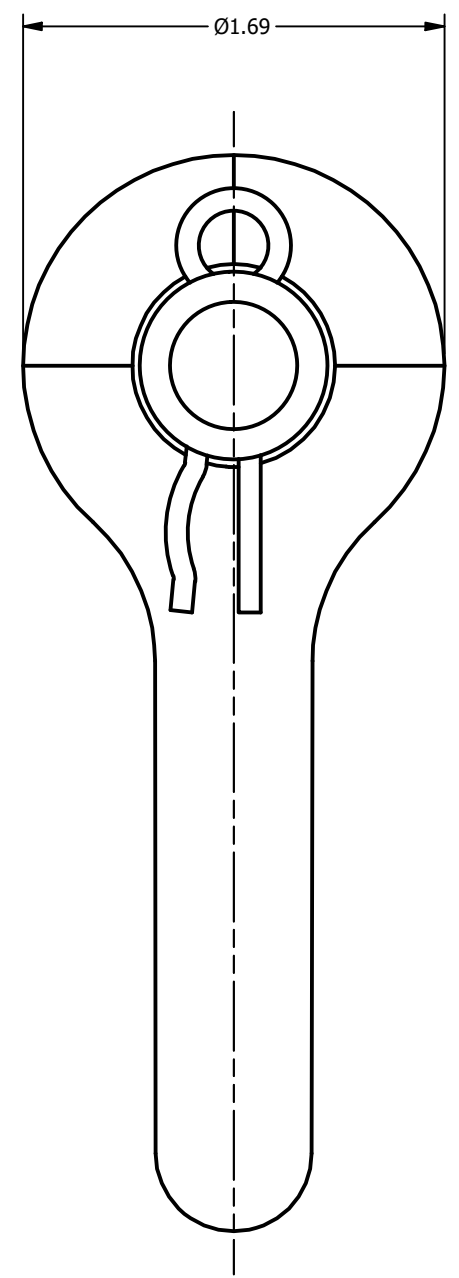
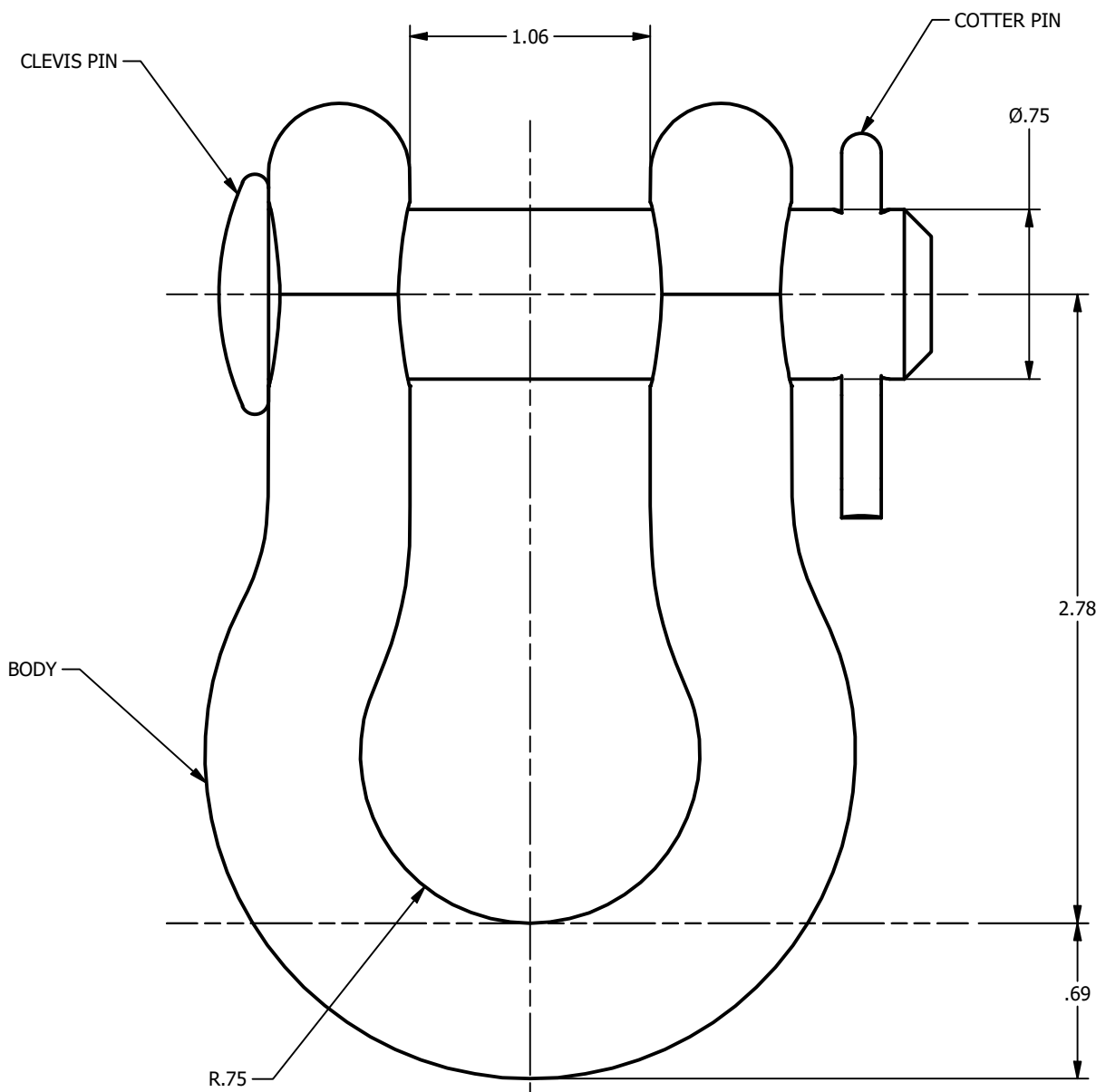


4

3

2

1



NOTES

- 1. MATERIAL:
 - BODY - GALV. FORGED STEEL
 - CLEVIS PIN - GALV. STEEL
 - COTTER PIN - STAINLESS STEEL
- 2. DIMENSIONS IN INCHES.
- 3. HOT DIP GALVANIZED PER ASTM A153.

--	--	--	DJ	PTB
EC #	DATE	CHANGED BY	CHECKED BY	APPROVED BY
DESCRIPTION: DRAWING CREATED IN INVENTOR				WEIGHT, LBS
--				1.48
--				 THIRD ANGLE PROJECTION
<div style="border: 1px dashed black; border-radius: 15px; padding: 5px; text-align: center; color: red; font-weight: bold;">PRELIMINARY</div>				
ADDITIONAL COMMENTS: --				

CONFIDENTIAL:
THIS DRAWING AND ITS CONTENTS ARE CONFIDENTIAL AND THE EXCLUSIVE PROPERTY OF HUBBELL POWER SYSTEMS. NO PUBLICATION, DISTRIBUTION OR COPIES MAY BE MADE WITHOUT THE WRITTEN CONSENT OF HUBBELL POWER SYSTEMS. HUBBELL POWER SYSTEMS UNPUBLISHED ALL RIGHTS RESERVED UNDER THE COPYRIGHT LAWS

HUBBELL POWER SYSTEMS, Inc.			
ANCHOR SHACKLE 35K LBS ULT. STR.			
CATALOG NUMBER: AS35			
SIZE B	DWG NO. CUTSHEET	PART / ASSY NO. --	REV A
SCALE: NTS	DRN BY: AN	DATE: 01/09/23	SHEET 1 OF 1

4

3

2

1